

WELCOME!

Thank you for purchasing the Medialink MLWR-AC1200 Wireless Gigabit Router



Scan here to find us on

YouTube



IMPORTANT NOTE:

There is no software required to install your new router. Just follow the simple steps in this Quick Installation Guide to complete the installation. For more information, please refer to the User Guide available for download at mediabridgeproducts.com/support/MLWR-AC1200.

REQUIREMENTS:

- A working Internet connection via Ethernet (this router is not a modem). If you are replacing a unit supplied by your ISP (Internet Service Provider) you may need to purchase a separate modem in order to use this router. You can also connect this router to your existing ISP device.
- Any computer with a working network adapter, a WiFi enabled Smartphone, or a WiFi enabled tablet.
- An electrical outlet.

RANGE EXTENDER MODE:

For instructions on how to install a Medialink MLWR-AC1200 as a range extender, please visit our YouTube channel: youtube.com/mediabridgeusa You can also reference the Range Extender Mode section of the User Guide at mediabridgeproducts.com/support/MLWR-AC1200

1 PREPARE TO INSTALL YOUR MEDIALINK ROUTER

1.1 Assemble the Medialink router to its base.

1.1a Align the included base with the slots on the bottom of the router (see image titled "1.1a" to the right).

1.1b Connect the base & the router by clicking them together (see image titled "1.1b" to the right).

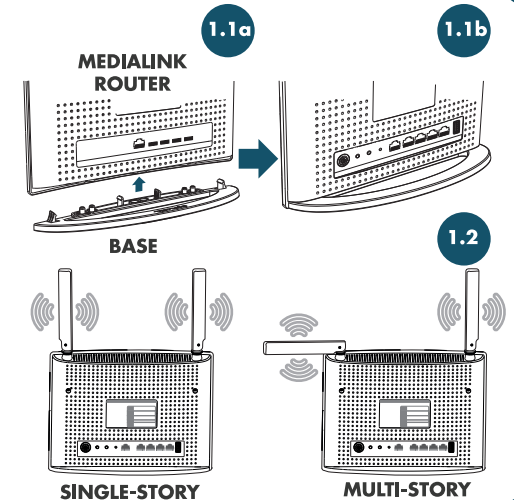
1.2 Position the router's antennas. For optimal signal coverage in a single-story home, position both antennas straight up & down. In a multi-story home, position one antenna straight up & the other out at a 90° angle in relation to the top of the router (see image titled "1.2" to the right).

1.3 Remove your old wireless router (if applicable). If you have an existing Wireless Router, disconnect it from your computer & modem/ISP connection.

1.4 Unplug the network cable connecting your ISP modem to your computer (if applicable*).

1.5 Power Down your modem (if applicable*).

* Your Internet service might come through a modem, gateway, pre-existing router or through an Ethernet jack on your wall.



2 PLUG IN YOUR MEDIALINK ROUTER

2.1 Using a network cable, plug one end into your modem. Plug the other end into your Medialink Router's **BLUE** WAN port (DO NOT connect the included AC/DC Adapter to the router's Power port at this time).

2.2 We suggest continuing the setup with a wired computer. However, if this is not possible or you prefer to set up the router wirelessly, please know there may be additional steps to complete the setup.

2.2a If you are setting up the router using a **wireless device**, please continue to section 2.3.

2.2b If you are setting up the router using a **wired device** (suggested option, see image titled "2.2b" to the right): Use another network cable & plug one end into your computer's network port. Then, plug the other end into one of your Medialink Router's **YELLOW** LAN ports numbered 1, 2, 3, or 4.

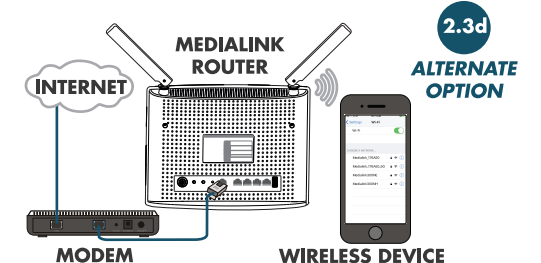
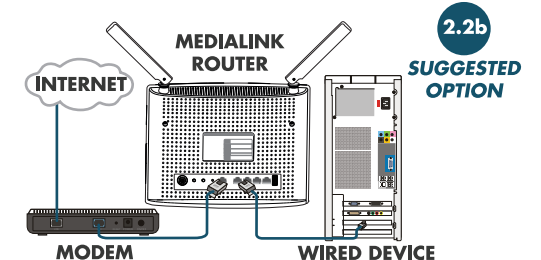
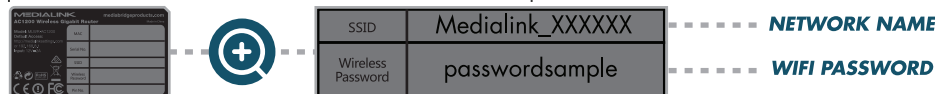
2.3 Power On Your Devices In The Following Sequence:

2.3a Power on your modem first by plugging the modem's power cord into an electrical outlet. Wait about 1 minute for modem to fully restart.

2.3b Power on your router second by plugging the router's power cord into an electrical outlet. Wait about 20 seconds for the router to fully start.

2.3c On the front panel of your router, the icons should be lit or blinking. If a computer is plugged into one of the **YELLOW** LAN ports of the router, then the corresponding numbered light should also be lit or blinking. If not, make sure the cables are connected correctly. If you set up the router using a wired device, please skip section 2.3d & continue to section 3.

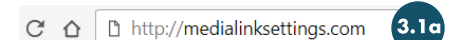
2.3d If setting up router using a wireless device (alternate option, see image titled "2.3d" to the right): Using a Smartphone, tablet or laptop, view the available wireless networks, then connect to "Medialink_XXXXXX" using your unique assigned WiFi Password. Both the network name & password printed on the sticker on the back the router. Example:



3 LOG IN TO THE SETTINGS PAGE OF YOUR MEDIALINK ROUTER

3.1 Log In To Your Router

3.1a Launch a web browser such as Chrome, Safari, Firefox, Edge, Internet Explorer. (If you do not have internet access at this time, it is ok to proceed.) Type <http://medialinksettings.com> into the address bar (not the search bar) & press Enter (see image titled "3.1a" above).

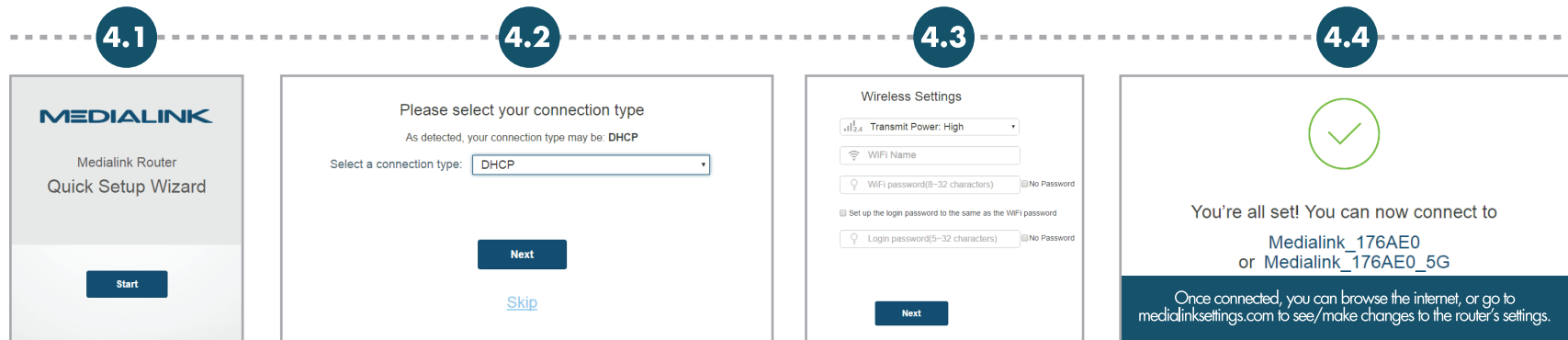


3.1a

4 QUICK SETUP WIZARD

Note: If you are unable to reach the router's web-based User Interface, verify your computer/device is either connected to the router via Ethernet to a **YELLOW** LAN port or connected wirelessly. Still having trouble? Reset the router to default settings by holding in the pinhole in the back of the router for 10 seconds. Then try again.

- 4.1 Click start (see image titled "4.1" below).
- 4.2 Select your connection type. Most users require DHCP, which means that your router automatically acquires a connection from your ISP. (see image titled "4.2" below).
- 4.3 Set the Transmit Power ("High" is recommended). Here you can customize your WiFi Password & Router Settings Login Password or keep the unique default settings & click Next. Note: The WiFi Password lets you connect any wireless device to your router. The Login Password lets you access the router's settings section in the web-based User Interface (see image titled "4.3" below).
- 4.4 If you made changes to the name or password & your device is not connected to the router via Ethernet, then connect to the new WiFi network you've created. Then, go to "medialinksettings.com" to log into the router & see more settings options or just start browsing the Internet (see image titled "4.4" below).



5 CONFIRM INTERNET ACCESS TO COMPLETE THE INSTALLATION

- 5.1 Open a new browser window (Chrome, Safari, Firefox, Edge, Internet Explorer) & confirm that you are able to access the Internet by visiting a website of your choice, such as www.mediabridgeproducts.com. If so, you may now connect all of your network devices (ie: laptop, tablet, printer etc.) to your router via Ethernet or wirelessly by scanning for your WiFi Network Name & then entering the WiFi Password.
- 5.2 If you don't have Internet, the most likely cause is that your modem or ISP connection needs to be reset. If you have a computer/laptop with an Ethernet port, you can try the steps below. If not, contact your ISP & ask them to reset the connection because you have installed a new router.
- 5.3 Use a computer or laptop that is connected via Ethernet to one of the **YELLOW** LAN ports on the Medialink router. Open an Internet browser & type medialinksettings.com (or 192.168.8.1) into the address bar. Then, when prompted, enter the Login Password you created (you may have chosen to make the Login Password the same as the WiFi Password). Click "System Settings", then click "WAN Settings". Use the dropdown menu next to "MAC Address" & select "Clone MAC Address" (MAC=Media Access Control – not an Apple computer) & click "Save". Then click "Reboot" & "Reboot the Router". After the router reboots, try the Internet again.



TIPS

Router lights too bright?

You can turn off or schedule the times the router's LEDs are turned off by following these steps:

- Log in to the router's settings page at medialinksettings.com (or 192.168.8.1) using the Router Settings Login Password that you've created.
- Select "Advanced Settings", then "LED Control".
- Choose "LED OFF" or "LED Schedule" to set the times & then click Save.

Forgot your password?

Press & hold the reset button on the back of the router for 8 seconds. The router's WiFi password will revert back to the uniquely assigned password printed on the label of the router.

Need more range?

A second unit (MLWR-AC1200) can be used to extend your WiFi signal to cover larger homes. For instructions on how to install a Medialink MLWR-AC1200 as a range extender, please visit our YouTube channel: youtube.com/mediabridgeusa

